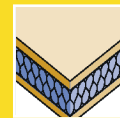


FERRO Passiv

THE ENERGY SAVER FOR LOWER HEATING COSTS.



NEW:
PAS 24
certified



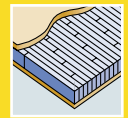
Solid PU thermal core



Exterior grade MDF faces



Flat steel stabilizer



Laminated core



Robust design



Decorative 5-ply faces on request



Acoustic insulation dB 43 on request



Fire-rating FD 30 / EI 30 on request



TECHNICAL DETAILS

1/8 DOOR FRAME			
1 Framing/timber	Finger-jointed and laminated timber framing.		
8 Flat steel stabilizer	Lock-side patented flat steel stabilizer – thermally separated and sound insulated – to absorb tractive and shearing forces. Flat steel straps are friction-locked glued.		
Frame width/Options to shorten/Glass apertures	Thickness of door blank 98 mm		
	Frame width in mm	Minimum width in mm	
	Top	70	45*
	Side	70	lock-side 45*/hinge-side 45*
	Bottom	70	45*
Minimum distance for glass apertures on all 4 sides: 180 mm			
2 INNER LAYER			
Construction	Quality-proven with long-term experience - Sandwich construction of laminated core (spruce) and HCFC-free and environmentally compatible PU hard foam - Smooth surface through vertically aligned annual rings		
3-7 FACING			
Bonding	AW bonding according to DIN 68705 T2 temperature resistant up to 130° - 5 layers (noble veneer, longitudinal) - 3 layers (cross grained veneer) = can be veneered individually Full-surface bonding with the overall construction		
EXTERNAL DOOR BLANK			
Model/finish	Cut and sanded		
Processing information	With FERRO Passiv external door blanks you can manufacture doors systems with an U-value, lower than 0.8 W/m²K). Please contact us and we will provide you with the relevant documents.		

* with a max. rebate of 30 mm.

TECHNICAL DETAILS

FERRO PASSIV/PASSIVKLIMA	Passiv
LENGTH IN MM	up to 2,470
WIDTH IN MM	up to 1,150
THICKNESS IN MM	98 (96*)
DIFFERENT CLIMATE TESTING	
DIN EN 1121 : 2000-09	test climate „c“
DIN EN 1121 : 2000-09	test climate „d“
DIN EN 1121 : 2000-09	test climate „e“
TOLERANCE CLASSES (by using three hinges)	
DIN EN 12219 : 2000-6	3
THERMAL TRANSFER COEFFICIENT	
U-value (W/m²K) according to EnEV	0.54
SOUND INSULATION	
DIN EN ISO 717-1 R _{w,p} (dB)	30-37
BURGLAR RESISTANT	
DIN ENV 1627 : 1999-04	WK2/WK3**
WEIGHT: 2,240 X 1,050 MM KG/PIECE	70

* cross veneered

** at the surface of the door blank

PfB Prüfzentrum für Bauelemente
Dipl.-Ing. (FH) Rüdiger Müller
Lehrbereich 31 • D-02113 Stolpe/Schirke (bei Riesa/Cottbus)



CNC- processing service

CNC processing on request
Also available as a Passive House compliant door kit with accessories.

PRODUCT RANGE

FERRO PASSIV/PASSIVKLIMA	Passiv
Length in mm	up to 2,470
Width in mm	up to 1,150
Thickness in mm	98
Mahogany	■
Okoume	■
Meranti	■
Oak	■
Pine	■
Spruce	■
Larch	■
Paint-grade	■
MDF exterior	■
HPL laminate	■
Cross grained PV	■

■ to guarantee the specified insulation values, FERRO Passiv-door blanks are manufactured according to individual specifications

All veneer surfaces = cut veneer or fine-line PV = peeled veneer face

Further dimensions, sizes and facings on request.

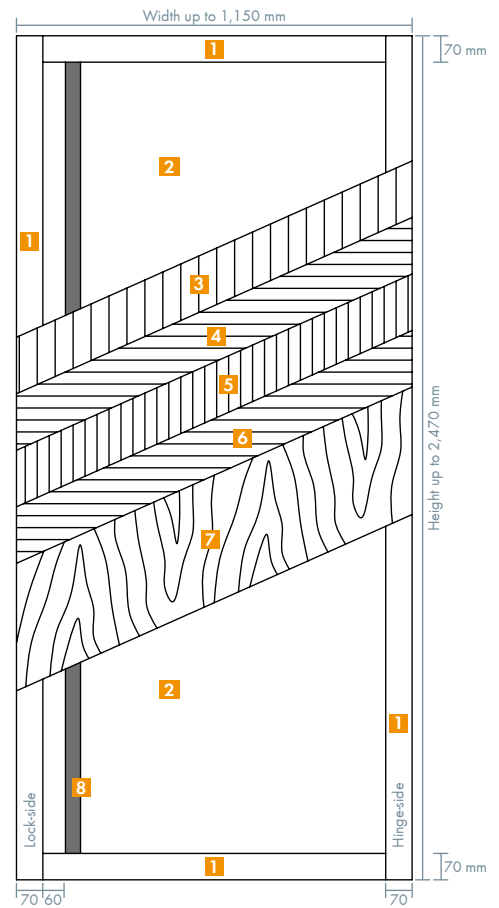
Any questions?

Further information and samples can be obtained from the James Latham marketing department. Phone: 0116-257-3415
Email: marketing@lathams.co.uk or click on www.lathamtimber.co.uk

This information is according to the present state of knowledge and does not represent an assurance of properties. Existing laws and regulations are to our products at his own responsibility. All information refers solely to products by Moralt AG.

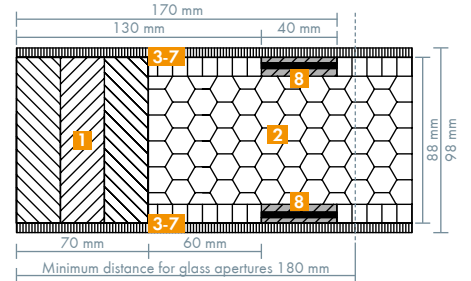


FERRO Passiv



- 1 Timber framing
- 2 Sandwich system with high thermal insulation
- 3-7 Facing
- 8 Flat steel stabilizer

Cross-section view lock-side



Cross-section view hinge side

