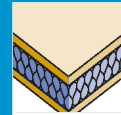


FERRO KlassikPlus

THE BESTSELLER FOR SECURITY AND COMFORT.



NEW:
PAS 24
certified



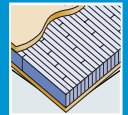
Solid PU
thermal core



Exterior grade
MDF faces



Flat steel
stabilizer



Laminated
core



Robust
construction



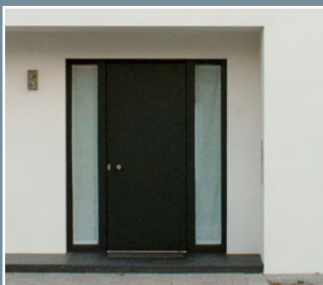
Decorative
5-ply faces
on request



Acoustic in-
sulation dB
47 on request



Fire-rating
FD 30 / EI 30
on request



TECHNICAL DETAILS

1/8 DOOR FRAME			
1 Framing/timber	Finger-jointed and laminated timber framing.		
8 Flat steel stabilizer	Lock-side patented flat steel stabilizer – thermally separated and sound insulated – to absorb tractive and shearing forces. Flat iron straps are friction-locked glued.		
Frame width/ Options to shorten/Glass apertures	Thickness of door blank 68/78/88/98 mm		
	Frame width in mm	Minimum width in mm	
	Top	155	45*
	Side	lock-side 70/hinge-side 155	lock-side 45*/hinge-side 45*
	Bottom	155	45*
Minimum distance for glass apertures on all 4 sides: 180 mm.			
2 INNER LAYER			
Construction	Quality-proven with long-term experience - Sandwich construction of laminated core (spruce) and HCFC-free and environmentally compatible PU hard foam - Well surface stability through vertically aligned annual rings		
3-7 FACING			
Bonding	AW bonding according to DIN 68705 T2 temperature resistant up to 130° - 5 layers (noble veneer, longitudinal) - 3 layers (cross grained veneer) = can be veneered individually Full-surface bonding with the overall construction		
EXTERNAL DOOR BLANK			
Model/finish	Cut and sanded		

* with a max. rebate of 30 mm.

TECHNICAL DETAILS

LENGTH IN MM	2,110/2,240/2,470			
WIDTH IN MM	950/1,050/1,150			
THICKNESS IN MM	68	78	88	98
DIFFERENT CLIMATE TESTING				
DIN EN 1121 : 2000-09	test climate „c“			
DIN EN 1121 : 2000-09	test climate „d“			
DIN EN 1121 : 2000-09	test climate „e“			
TOLERANCE CLASSES (by using three hinges)				
DIN EN 12219 : 2000-6	3			
THERMAL TRANSFER COEFFICIENT				
U-value (W/m²K) according to EnEV	0.92	0.86	0.75	0.68
SOUND INSULATION				
DIN EN ISO 717-1 R _w ,[dB]	31			
BURGLAR-RESISTANCE				
DIN ENV 1627 : 1999-04	WK2*/WK3*			
WEIGHT: 2,240 X 1,050 MM KG/PIECE	62	70	72	78

* at the surface of the door blank



PRODUCT RANGE

FERRO KLASSIKPLUS – 68 MM / 78 MM							
Length in mm	2,110 (1,880*)		2,240 (2,010*)			2,470 (2,240*)	
Width in mm	950	1,050	950	1,050	1,150	1,050	1,150
Mahogany	▲	○	▲	○	▲	■	■
Okoume	▲	○	▲	○	▲	■	■
Meranti	▲	▲	▲	▲	▲	■	■
Oak	▲	○	▲	▲	▲	■	■
Pine	▲	▲	▲	▲	▲	■	■
Spruce	▲	▲	▲	▲	▲	■	■
Larch	▲	▲	▲	▲	▲	■	■
Paint-grade	○	○	▲	○	▲	○	■
MDF exterior	○	○	▲	○	▲	○	■
FERRO KLASSIKPLUS – 66 MM / 76 MM							
Length in mm	2,110 (1,880*)		2,240 (2,010*)			2,470 (2,240*)	
Width in mm	950	1,050	950	1,050	1,150	1,050	1,150
Cross grained PV	▲	○	▲	▲	▲	■	■

* minimal dimension ■ order-based production ○ in stock up to 78 mm ▲ available in 5 working days PV = peeled veneer face

All veneer surfaces = sliced veneer or fine-line

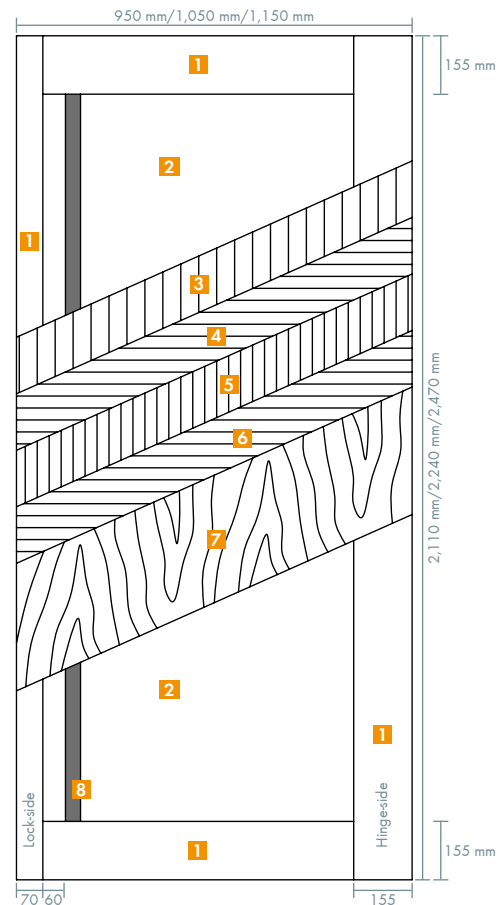
Further dimensions, sizes and facings on request.

Any Questions?

Further information and samples can be obtained from the James Latham marketing department. Phone: 0116-257-3415
Email: marketing@lathams.co.uk or click on www.lathamtimber.co.uk

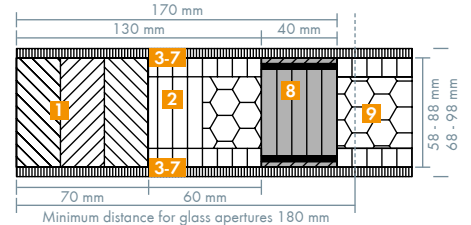
This information is according to the present state of knowledge and does not represent an assurance of properties. Existing laws and regulations are to be followed by the recipient of our products at his own responsibility. All information refers solely to products by Moralt AG.

FERRO KlassikPlus

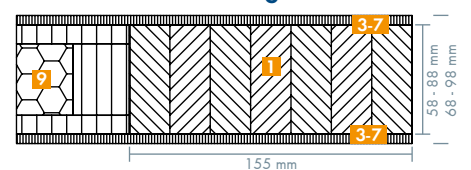


- 1 Timber framing
- 2 Sandwich construction of laminacore with hard foam
- 3-7 Facing
- 8 Flat steel stabilizer
- 9 PU hard foam

Cross-section view lock-side



Cross-section view hinge side



CNC-processing service

CNC processing on request.

